

Capel

CYMDEITHAS TREFTADAETH Y CAPELI
THE CHAPELS HERITAGE SOCIETY



CYLCHLYTHYR / NEWSLETTER 21

GAEAF / WINTER 1993/4



Maesyronnen

CYFARFOD CYFFREDINOL BLYNYDDOL

Cynhaliwyd 8fed Cyfarfod Cyffredinol Blynyddol y Gymdeithas yn Neuadd y Pentref yn y Clas-ar-Wy ddydd Sadwrn 16 Hydref 1993.

- 1) Croesawyd yr aelodau i'r Clas-ar-Wy gan y Cadeirydd.
- 2) Derbyniwyd ymddiheuriadau am eu habsenoldeb oddi wrth Mr Vernon Hughes, Mr Allan Mayne, Dr Dilys Quick, Dr Malcolm Seaborne ac ysgrifennydd y Chapels Society.
- 3) Derbyniwyd a chadarnhawyd cofnodion y 7fed Cyfarfod Blynyddol, a gynhaliwyd yn Rhosllanerchrugog ar 17 Hydref 1992.

4) Adroddiad y Cadeirydd

- a) Cyflwynodd y Cadeirydd adroddiad am yr arolwg a wneir gan y Gymdeithas i gapeli Meirionnydd. Derbyniwyd ymateb da i'r holiaduron. Yn Gymraeg yr oedd y rhan fwyaf o'r atebion ac ymgwymerwyd â'r gwaith o'u cyfieithu gan Dr Dilys Quick. Rhoddwyd copïau o'r holiaduron a gwblhawyd yn yr Archifdy yn Nolgellau, yn Llyfrgell Genedlaethol Cymru ac yng Nghomisiwn yr Henebion yn Aberystwyth.
- b) Wedi gweld nifer o adroddiadau yn y wasg ynglŷn â chadwraeth addoldai anghydfurfiol yn Lloegr, trefnwyd cyfarfod gyda chynrychiolwyr CADW, a esboniodd y rheolau a ddilynir ar hyn o bryd wrth ymdrin â cheisiadau am grantiau. Pwysleisiodd CADW y dylai CAPEL roi cyhoeddusrwydd i'r cronfeydd sydd ar gael a chymell a chynorthwyo capeli i wneud ceisiadau am grantiau.
- c) Diolchodd y Cadeirydd i'r Ysgrifennydd, y Trysorydd a Golygydd y *Cylchlythyr* am eu gwaith dros y Gymdeithas yn ystod y flwyddyn.

5) Adroddiad yr Ysgrifennydd

- a) Cynhaliwyd cyfarfod y gwanwyn ar 15 Mai 1993 yn Sir Benfro ac fe'i trefnwyd gan y Parchedig Richard Williams, Wystog. Rhoddwyd darlith gan y Parchedig J E Wynne Davies, Aberystwyth, ar hanes Methodistiaeth yn Sir Benfro ac wedyn fe ymwelwyd â nifer o safleoedd a chapeli yn Llys-y-Frân, Henllan Amgoed a Rhydwyilm.
- b) Cynhaliwyd nifer o gyfarfodydd yn ystod y flwyddyn gan grŵp De-Ddwyrain Cymru, pryd yr ystyriwyd yr arolwg capeli a wnaed gan Adran Gynllunio Morgannwg Ganol ac a gedwir yn yr Archifdy. Cafwyd sgrysiâu hefyd ar gapeli Sir Faesyfed a'r eglwys Norwyaidd yng Nghaerdydd.
- c) Yn ystod y flwyddyn fe ffurfiwyd cangen ar wahân yng Ngwent, a fyddai'n gweithredu'n annibynnol ond mewn cydweithrediad â Grŵp y De Ddwyrain.
- ch) Yn ystod y flwyddyn gofynnwyd am farn CAPEL ar nifer o faterion yn ymwneud ag adeiladau capeli, yn eu plith y canlynol:
Capel Newydd, Nanhoron; y Capel Presbyteraidd, Llandegai;
Neuadd y Glowyr gynt, Tretomos, Merthyr Tudful;

datblygiad Bethel Square, Aberhonddu; Capel Wystog, Sir Benfro; Soar, capel M.C. Cwmaman, Aberdâr; ac ail arolwg gan Gyngor Dinas Abertawe ar adeiladau hanesyddol yn Nhreforus.

Gofynnwyd am farn CAPEL hefyd ynglŷn ag adroddiad i Awdurdod Parc Cenedlaethol Arfordir Sir Benfro ar adeiladau crefyddol yn Nyfed nad oedd iddynt ddefnydd bellach.

- d) Mynegodd yr Ysgrifennydd ei diolch i'r Dr D Huw Owen ac i staff y Llyfrgell Genedlaethol am eu cefnogaeth yn arbennig wrth argraffu a phostio llenyddiaeth y Gymdeithas i'r aelodau. Terfynodd trwy ddiolch i Mr Alun Jones, golygydd y *Cylchlythyr* ac i Ms Elizabeth Evans, cynghorwr ar bensaernïaeth, am eu cefnogaeth a'u cydweithrediad drwy gydol y flwyddyn.

6 Adroddiad y Trysorydd

Cyflwynodd y Trysorydd adroddiad ariannol am y flwyddyn hyd at 31 Awst 1993. Adroddodd fod llai o aelodau heb dalu eu tanysgrifiadau na phan gyflwynodd adroddiad ddiwethaf.

7 Ethol Swyddogion ac Aelodau'r Pwyllgor

Dywedodd y Cadeirydd ei bod yn dal at ei bwriad i ymddiswyddo o fod yn Gadeirydd ac adroddodd fod Mr Kevin Matthias o Archifdy Clwyd wedi'i enwebu i'r swydd. Eiliwyd y cynnig gan Ms Elizabeth Evans ac etholwyd Mr Matthias yn Gadeirydd.

Ail-etholwyd yr Ysgrifennydd a'r Trysorydd ac aelodau'r Pwyllgor.

8 Unrhyw Fater Arall

Mynegodd Mr J Freer y farn y dylid darparu cyllid o gronfa ganolog y Gymdeithas i gefnogi gweithgareddau'r canghennau.

Awgrymodd Mr D. L. Davies y dylid dosbarthu taflenni Gwybodaeth CAPEL drwy lyfrgelloedd, amgueddfeydd ac archifdai er mwyn lledaenu ymwybyddiaeth o weithgareddau CAPEL.

Cytunwyd i gynnwys rhestr o'r swyddogion ac aelodau'r pwyllgor yn rhifyn nesaf y *Cylchlythyr*.

Susan Beckley, Ysgrifennydd

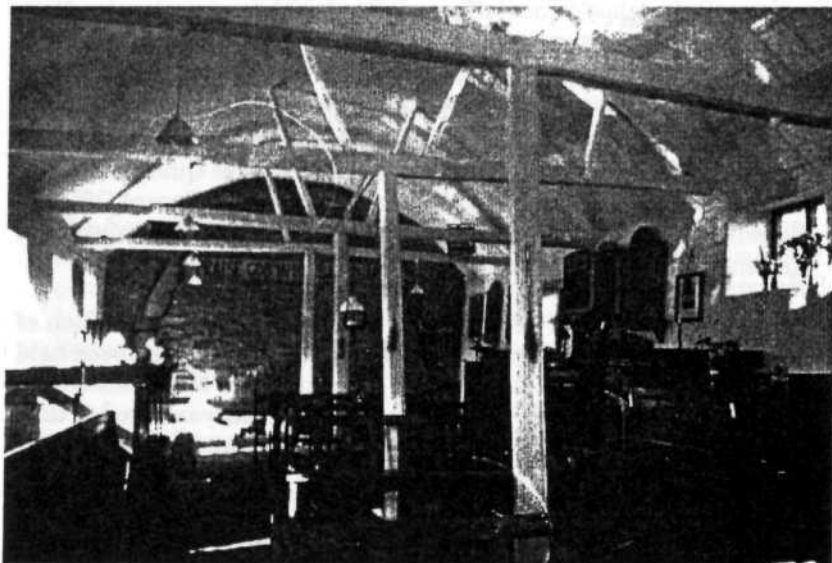
Yn ôl y rhaglen yr oedd y Cyfarfod Blynyddol i'w ddilyn yn syth gan ddarlith ac arddangosiad o sleidiau o gapeli Sir Faesyfed gan y Parch R W D Fenn a Mr J B Sinclair, ond roedd hi'n ddiwrnod mor heulog nes ei gwneud yn anodd dangos sleidiau. Gohiriwyd y ddarlith felly tan ar ôl cinio ac yn wir roedd y ddarlith a'r lluniau'n werth aros amdanynt - fel y gellid disgwyl oddi wrth awduron *Marching to Zion*, llyfr â chyfoeth o luniau capeli Maesyfed a gyhoeddwyd yn 1990 (ac a adolygwyd yn rhifyn 13 ein *Cylchlythyr*). Yn y cyfamser aeth y cwmni allan i'r wlad i weld Maesyronnen y capel hyfryd o'r ddeunawfed ganrif sy'n edrych fel tŷ o'r tu allan ac â'i drefniant cartrefol, teuluol, o'r seddau oddi mewn, y cerrig coffa lliosog ar y muriau a'r dilyniant gweinidogion yn ôl i'r ail ganrif ar bymtheg ar y pwlpudd. Dychwelwyd i'r Clas-ar-Wy i weld capeli gwahanol iawn - Capel y Bedyddwyr Treble Hill ar ddull neoglasurol mewn brics coch, Capel Diwygiedig Unedig ar ddull gothig canol oes Victoria ac yna, wedi taith gerdded hir, capel bychan Methodistiaidd Cwm Bach.

Aeth y rhan fwyaf o'r aelodau wedyn i'r Gelli Gandryll i ddilyn y daith gerdded a drefnwyd gan Dr Fenn a Mr Sinclair. Yn anffodus roedd yr amser yn brin ac ni fu'n bosib gweld y tu mewn ond i un capel, Ebenezer, capel Annibynnol, sgwâr ar fryncyn, a'i organ ymwithiol yn llenwi'r gornel gerllaw'r pwlpudd.

ANNUAL GENERAL MEETING

The 8th Annual General Meeting of the Society was held in Glasbury Village Hall on Saturday 16 October 1993.

- 1) The Chairman welcomed the members to Glasbury.
- 2) Apologies for absence were received from Mr Vernon Hughes, Mr Allan Mayne, Dr Dilys Quick, Dr Malcolm Seaborne and the Secretary of the Chapels Society.
- 3) The minutes of the 7th AGM, held at Rhosllanerchrugog on 17 October 1992 were accepted.



Maesyronnen: interior and pulpit



4) Chairman's Report

- a) The Chairman reported on the progress of the survey of chapels in Merioneth. A good response had been received to the questionnaires. Most of the replies had been made in Welsh and the work of translating them into English had been undertaken by Dr Dilys Quick. Copies of the completed questionnaires had been placed in the Record Office at Dolgellau, the National Library of Wales and the Royal Commission on Ancient and Historical Monuments in Wales at Aberystwyth.
- b) Following a number of press reports concerning the preservation of nonconformist places of worship in England, a meeting had been held with representatives of CADW, who had explained and stressed the existing procedures for grant applications. CAPEL was urged to take a pro-active role in publicising the funds available and in encouraging and assisting chapels to make applications.
- c) The Chairman thanked the Secretary, the Treasurer and the Editor of the *Newsletter* for their work on behalf of the Society during the year.

5) Secretary's Report

- a) The Spring meeting had been held on 15 May 1993 in Pembrokeshire and had been organised by the Reverend Richard Williams of Woodstock. The Reverend J E Wynne Davies of Aberystwyth had given a lecture on the history of Methodism in Pembrokeshire and this had been followed by visits to sites and chapels at Llys-y-Frân, Henllan Amgoed and Rhydwylym.
- b) The South East Wales Group of CAPEL had held several meetings during the year, and these had included consideration of the Mid-Glamorgan Planning Department's chapel survey held at the Record Office and on the Norwegian Church in Cardiff.
- c) During the year a separate branch of Capel had been formed in Gwent, and was functioning independently of, but working in conjunction with, the South East Wales Group.
- d) CAPEL had been consulted on various matters regarding chapel buildings, including the following:
Capel Newydd, Nanhoron; the Presbyterian Chapel, Llandegai;

the former Miners' Hall, Thomastown, Merthyr Tydfil; the development of Bethel Square, Brecon; Woodstock Chapel, Pembrokeshire; Soar C.M. Chapel, Cwmaman, Aberdare; and a re-survey by Swansea City Council of historic buildings in Morriston. CAPEL had also been consulted regarding a report to the Pembrokeshire Coast National Park Authority concerning redundant religious buildings in Dyfed.

- e) The Secretary expressed her thanks to Dr D Huw Owen and the staff of the National Library of Wales for their continuing support in printing and mailing the Society's literature to members. She concluded by thanking Mr Alun Jones, the newsletter editor, and Ms Elizabeth Evans, architectural adviser, for their support and co-operation throughout the year.

6) Treasurer's Report

The Treasurer presented a Statement of Accounts for the year ending 31 August 1993. He reported that fewer members were in arrears with their subscriptions.

7) Election of Officers and Committee Members

The Chairman reiterated her wish to stand down as Chairman and reported that Mr Kevin Matthias of the Clwyd Record Office had been nominated for the office. The nomination was seconded by Ms Elizabeth Evans and Mr Matthias was elected chairman.

The Secretary and Treasurer were re-elected, as were the existing committee members.

8) Any Other Business

Mr J Freer expressed the view that finance should be provided from central funds to support branch activities.

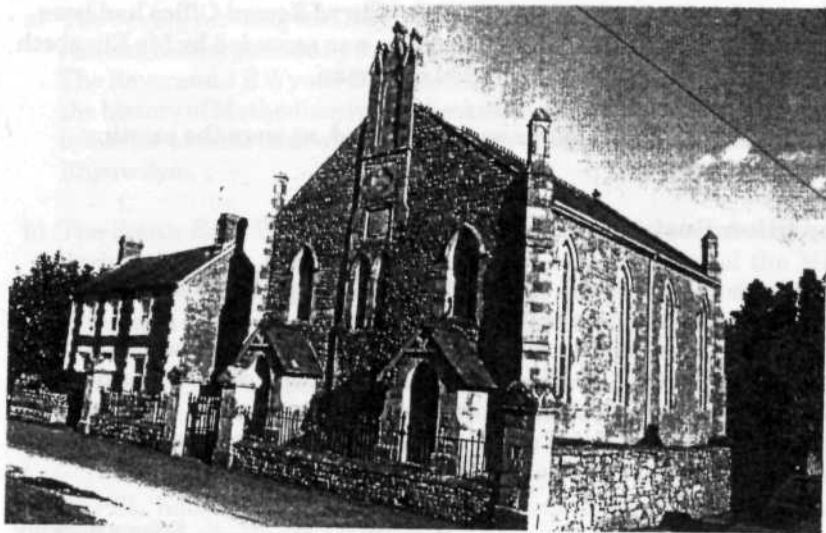
Mr D L Davies suggested that CAPEL information leaflets should be distributed through libraries, museums and record offices, in order to increase awareness of the activities of the Society.

It was agreed that a list of officers and committee members would be included in the next issue of the Newsletter.

Susan Beckley
Secretary

The Annual General Meeting was due, according to the programme, to have been followed immediately by an illustrated talk on Radnorshire chapels by the Rev R W D Fenn and Mr J B Sinclair but in fact the brilliant sunshine we enjoyed made it difficult to show the slides, so the lecture had to be postponed until after lunch. It was well worth waiting for - as was only to be expected from the authors of the 160 page, profusely and expertly illustrated book on Radnorshire chapels *Marching to Zion*, (published in 1990 and reviewed in our *Newsletter 13*). In the meantime the company drove out in convoy to see the beautiful eighteenth century chapel of Maesyronnen, with its domestic looking exterior, its homely, informal seating arrangement inside, its numerous memorial plaques and its pulpit bearing the list of ministers back to the seventeenth century. We returned to Glasbury to view the very different neoclassical Treble Hill Baptist Chapel, the mid-Victorian Gothic United Reformed Chapel and, after a long trek, the little Cwm Bach Methodist Chapel with its characteristic hipped roof.

Most of the members then drove on to Hay-on-Wye for a brief walk-about, following the map prepared by Dr Fenn and Mr Sinclair. Unfortunately, there was time to see inside only one of the chapels, the cube-shaped Independent chapel, Ebenezer, with its imposing pipe-organ filling the corner alongside the pulpit.



United Reformed Church, Glasbury

Bethania
Evangelical Church
Hay on Wye
(formerly
Oxford Road
Primitive
Methodist Church)



United Reformed
Church, Hay on Wye



WELSH CHAPEL ARCHITECTS

by

Vernon Hughes and Malcolm Seaborne

The difficulty of ascertaining the names of the architects of many chapels in Wales is well known. The on-going *Buildings of Wales* series will eventually fill some of the gaps, and other names will doubtless emerge as the numerous chapel histories come to be analysed. The architectural journals and the Welsh periodical press also provide details, but they are a very voluminous source to use. It therefore seems useful to publish a list of the architects of Welsh chapels mentioned in the periodical *The Builder* between 1843, when it began publication, and 1890.

The Builder usually gives details of the architect, the cost, and the number of seats provided; sometimes there is a full architectural description, though there are occasional misprints and inaccuracies. In the list below, the spelling of place-names generally follows that given in *The Builder*. Each reference is to the annual volume and page number. (After 1880 there were two volumes per year, noted below as A and B.) To aid identification, the names of roads have been added where stated, and also the denomination, using the following abbreviations: B. Baptist; B.C. Bible Christian; C.M. Calvinistic Methodist; C. Congregationalist; E.B. English Baptist; E.P. English Presbyterian; E.W. English Wesleyan; I. Independent; M. Methodist (usually implying C.M.); M.F.C. Methodist Free Church; P. Presbyterian; P.M. Primitive Methodist; U. Unitarian; W. Wesleyan; W.B. Welsh Baptist; W.P. Welsh Presbyterian; W.W. Welsh Wesleyan.

Among the general points of interest which may be noted are:

- 1) Although a few architects tendered from England, the majority were based in Wales. Some were employed by only one denomination, while others ranged over several.
- 2) In the 1870s and 1880s there were more extensions to existing chapels and more chapels were designed for English speaking congregations.
- 3) Separate Sunday schoolrooms were increasingly provided after 1870, following the 1870 Education Act, which led to the establishment of many non-denominational day schools.
- 4) Most chapels cost between £1000 and £2000 to build. The cost naturally varied according to the size and averaged between £3 and £5 per place. The

most expensive chapels noted in *The Builder* were built at Swansea (Humphreys 1873, £10,000) Colwyn Bay (Curwen 1882, £6000), and Wrexham (Waddington 1890, £6000).

This list provides details of only a small proportion of the chapels actually built in Wales and their inclusion in *The Builder* is not a guarantee of their architectural importance. While it is clear that certain architects became specialists in chapel building, the variety of practitioners reflected the varied nature of the clientele and resulted in some notable buildings.

- AUDSLEY, W. & G., of *Liverpool*, Wrexham, Regent St., C.M., 1867,810.
BARKER, E.H.L., of *Hereford*, Brynamman (Carms.), W.C.seceders, 1880B, 543, 1881B,375
BIDLAKE, G. of *Wolverhampton*, Welshpool, W., 1863, 796
BIDLAKE & FLEMING, of *Wolverhampton*, Newport, W., 1876,794
BLACKBURN, W., Newport, Marshes Rd., B.C., 1883B,195
BRUTON, E.H., of *Cardiff*, Cardiff, Tredegarville, U., 1886A,387
BUCKNALL, A., of *Sketty*, Swansea, St. Helen's Rd., C.M. 1873,814
BURGOINE, of *Blaenavon*, Gilwern (Brecs.), B., 1876,985
CLEMENT, of *Swansea*, Cardiff, Bellevue St., W., 1853,278
CUBITT, of *London*, Swansea, Herbert Place, 1875,332
CURWEN, R., of *London and Liverpool*, Conway, Rosehill St., E.W.,1880B,572; Colwyn Bay, St.John's, E.W., 1882B,434
DAVIES, Rev. A., of *Rhymney*, Ystrad Mynach (Glam.), C.M., 1866,451
DAVIES, R., of *Bangor*, Rhos (Denbs.), W.W., 1875,289; Bangor, E.W., 1875,827; Abergele, W., 1880B,543; Chester, Queen St., W.W., 1883A, 905
DOUGLAS, J., of *Chester*, Rossett (Denbs.), C.,1875,782
DREW, W., of *Swindon*, Aberdare, Trecynon, W., 1887B,191
EDWARDS, C., of *Rhyl*, Colwyn Bay, E.C., 1885A,535
EVANS, J., of *Llanfair Caereinion*, Barmouth,W., 1856,389
FAWCKNER, J.F., of *Newport*, Cardiff, Miskin St., B.C., 1890B,350
FELTON, G., Llandudno, W.W., 1873,556
FLEMING, of *Wolverhampton*, Gors (Rads.), C., 1878,708
FREEMAN, T., of *Brynhyfryd*, Landore, Siloh, C., 1876,794; Swansea, Plasmarl, Hermon, C., 1878,708
GRIFFITHS, W.L., Blackwood (Mon.), E.B., 1890B,236
GWYTHYR, W.W., of *London*, Mold, New St., W.P., 1863,555; Mold, Tyddyn St., C.,1863,555
HABERSHORN, Newport, Hope, I., 1850,226
HABERSHORN & PITE, Pembrey (Carms.), C., 1870,274; Newport, Hill St.,

- C., 1870,274; Cardiff, Roath Rd., W., 1870,274, 1871,533; Cardiff, Splott-lands, C., 1870,456
- HABERSHON, PITE & FAWCKNER**, of *London, Cardiff and Newport*, Swansea. St.Helen's Rd., W., 1872,571
- HABERSHON & FAWCKNER**, of *Cardiff and Newport*, Cardiff, Broadway, W., 1879,34; Cardiff, Canton, W., 1886A,871; Blaenavon, Broad St., B., 1888A,272
- HANCORN, S.**, of *Newport and Bristol*, Ebbw Vale, E.W., 1861,515; Tintern, W., 1861,705; Brynmawr, E.W., 1861,721; Nantyglo, C.M., 1862,624; Lower Cwmbran, E.W., 1867,718
- HARRIS, H.C.**, Cardiff, Pembroke Terrace, C.M., 1878,501
- HARTLAND**, of *Cardiff*, Cardiff, Guildford St., M.F.C., 1863,901; Cardiff, Bethany, (? Tabernacle, The Hayes), 1865,418
- HUMPHREYS, J.**, of *Morriston*, Llanelly, New Dock, C., 1867,718; Swansea, High St., Zoar, W.C., 1870,652; Swansea, Morriston, Libanus (? Tabernacl C.), 1873,333; Llanidloes, (Zion), W.C., 1878,790.
- HURST, R.**, Pentrebrith,(Mont.), C., 1881B,651
- JAMES, J.**, of *London*, Llandudno, Tudno St., 1856,484
- JENKINS, D.**, of *Llandebie*, Llannon, (Carms.), The Tumble, C., 1888B,129
- JOHNSON, F. D.**, of *Birmingham*, Rhyl, Sussex St., E.B., 1863,84 and 815
- JONES, E.**, of *Newtown*, Caersws (Mont.), W., 1875,651
- JONES, J. H.**, of *Mold*, Mold, W.B., 1876,818
- JONES & PARKE**, Newtown, P.M., 1881B,286
- JOSEPH, T.**, Aberdare, B., 1852, 308
- LADD, K.W.**, Tenby, W., 1879,1414
- LANDER & BEDELLS**, of *London*, Llanelly, Park C., 1865,862; Neath, E.B., 1871,374
- LANSLOWNE, E.A.**, of *Newport*, Abersychan, W., 1869,575; Abercarn, E.B., 1882B,228
- LAWRENCE & GOODMAN**, of *Newport*, Haverfordwest, C., 1872,792 and 1874,756
- LAY, B.**, of *Welshpool*, Llansaintfraid (Mont.), Bethesda, 1875,708
- MASON, W.I.**, of *Liverpool*, Ruabon, C., 1858,380
- MORGAN, G.**, of *Carmarthen*, Abergavenny, Frogmore St., B., 1877,827
- MORRISON**, of *Wrexham*, Wrexham, Chester St., B., 1875,827
- NORTHCROFT, G.**, of *Bangor*, Bangor, E.C., 1855,465
- OWEN, W.**, of *Llanrwst*, Rhyl, Clwyd St., C.M., 1855,357
- OWENS, R.**, of *Liverpool*, Rhyl, Water St., W.B., 1866,730; Caernarvon, Moriah, M., 1867,667; Caernarvon, Brynrodyn, M., 1867,667; Abergelge, Mynydd Seion, Chapel St., M., 1867,667; Dwyran (Ang.), M., 1867,667; Aberystwyth, E.B., 1869,756; Aberystwyth, Newfoundland St., E.M., 1871,272; Buckley, Mold Rd., Bistre,

- Bethel, C.M., 1878,790; Caernarvon, Castle Square, E.P., 1882B,573
- PAULL, H.J.**, of *Cardiff and Manchester*, Aberdare. U., 1861,45; Swamsea, Walter Rd., C., 1866,802 1869,712
- PENSON**, Saltney (Flints.), W., 1856,402
- PHILLIPS, J.H.**, of *Cardiff*, Llandoverly, Memorial Chapel, 1886B,47; Cardiff, Plas Newydd Square, C.M., 1886B,80 and 720; Penarth, P., 1886B,544 and 695
- POULTON, W.F.**, of *Reading*, Brecon, P., 1865,930 and 1872,145
- RANGER, W.** Montgomery, Shiloh, W., 1873,616
- REES, J.D.**, Neath, W.B., 1862, 719 and 1863,555
- RIDER, H.**, of *Welshpool*, Welshpool, Groes Lwyd, E.C., 1880A,746, 1880B,571
- ROBERTS, Rev. H.**, of *Pontypridd*, St. Mellons, B., 1882A,723
- RODERICK, T.**, Aberdare, Cwmaman, B., 1890B,76
- SEWARD & THOMAS**, of *Cardiff*, Barry Dock, W., 1890B,316
- SMITH, R.M.**, of *Manchester*, Rhyl, C., 1858,559
- SPAULL, W.H.**, of *Oswestry*, Montgomery, W., 1863,902, 1864,570, 590; Llanymynech (Salop.), P., 1864,479; Aberystwyth, Queen's Rd., E.W., 1870,590
- STRINGER, R.D.** Pembrey, E.W., 1866, 658
- SUTTON, R.C.**, of *Nottingham*, Pembroke Dock, C., 1865,27
- SZLUMPER & ALDWINCKLE** of *London & Aberystwyth*, Llandinam (Mont.) C.M., 1872,294
- THOMAS, Rev. H.**, of *Ystradgynlais*, Morriston, B., 1869,832
- THOMAS, J.**, of *Swansea*, Llansamlet (Glam.), Bethel, 1880B,572
- THOMAS, R.G.**, of *Menai Bridge*, Beaumaris, Hen Blas, E.P., 1869,434, 1870,652; Bangor, Craig, C.M., 1870,774, 1873,36; Paradwys (Ang.), I., 1870,774; Trevecca, Memorial Chapel, 1872,434, 734; Seacombe, Birkenhead, W.P., 1875,1050, 1876,602, 672; Menai Bridge, E.P., 1886B,437
- THOMAS, R.G.**, of *Newport and Adelaide*, Cardiff, Charles St., C., 1855,333; Newport, B., 1856,336; Castleton, B., 1857,412. (This architect returned to Australia in 1860 and died there in 1883: ex inf R.I.B.A.)
- THOMAS, Rev. T.**, of *Landore*, Brecon I. College, 1867,216, 267, 416, 1869,822; Newcastle Emlyn, W.P., 1868,238; Maesteg, I., 1870,535; Buckley, St. John's, C., 1872,492, 1874,77; Bridgend, Kenfig Hill, I., 1879,981
- TOTTEN**, Swansea, Mumbles, W., 1877,894, 1878,708
- WADDINGTON**, of *Burnley*, Wrexham, Regent St., W., 1890B,214
- WATKINS, A.C.**, of *Newport*, Newport, Victoria Rd., C., 1858,542; Tredegar, C., 1875,918

WILLIAMS, J., Tongwinlas, E.B., 1862,879

WILLIAMS, T.G., of *Liverpool*, Ruthin, Well St., W.P., 1889B,250

WILLS, J., of *Derby*, Cross Keys, P.M., 1879,1121; Llandyssil (Mont.), U., 1883B,63; Penmaenmawr, W., 1890B,354

WILSON, J., of *Bath*, Cardiff, Loudon Square, W., 1855,544, 1859,716

Note: Some of these chapels have been demolished, but many others survive. It is hoped that members of Capel will be able to identify those which survive in their own areas Any corrections or additions should be sent to the editor for inclusion in a future issue of the *Newsletter*. It is hoped that references to Welsh chapels in *The Builder* between 1891 and 1914 will be published in a subsequent article.

A MESSAGE FROM THE TREASURER

There has been some confusion in the banks' clearing system and difficulty has been experienced in tracing some of the standing order payments.

Any member who pays his/her annual subscription by standing order and has not received a receipt with this newsletter is asked to contact the Treasurer.

Later in the year, our account is being changed and members will be sent amended standing order forms.

NEGES ODDI WRTH Y TRYSORYDD

Bu rhywfaint o anrhefn yn system gyfnewid y banciau a chafwyd trafferth i olrhain rhai o'r taliadau drwy archeb parhaol.

Gofynnir i unrhyw aelod sy'n talu i danysgrifiad blynyddol drwy archeb parhaol ac sydd heb gael derbynneb gyda'r Cylchlythyr hwn gysylltu gyda'r Trysorydd.

Yn nes ymlaen yn y flwyddyn bydd newid yng nghyfrif y Gymdeithas a danfonir ffurflenni diwygiedig i'r aelodau.

Cdr A F Mortimer, Allt Goch Uchaf, Llanfyllin, Powys, SY22 5EP (Tel. 0691 648524)

**Pwyllgor a Swyddogion / Officers and Committee
1993-4**

Cadeirydd / Chairman

Mr R K Matthias Clwyd Record Office, Ruthin Branch,
46, Clwyd St., Ruthin, Clwyd, LL15 1HP
Tel. (Office): 0824 703077; (Home) 0352 254903

Ysgrifennydd / Secretary

Miss Susan Beckley West Glamorgan Record Office,
County Hall, Oystermouth Rd., Swansea, SA1 3SN
Tel. (Office) 0792 471589; (Home) 0792 817880

Trysorydd / Treasurer

X Cdr. A F Mortimer Allt Goch Uchaf, Llanfyllin, Powys SY22 5EP
Tel. 0691 648524

Pwyllgor / Committee

Mr M Culliford 27 Clyffard Avenue, Newport, Gwent
Tel. 0633 211297

Mr D Leslie Davies 5 Milton St., Cwmaman, Aberdare, Mid Glamorgan
Tel. 0685 873226

Ms Elizabeth Evans Hollycroft, Midway Lane, Abergavenny, Gwent
Tel. (Office) 0495 762311; (Home) 0873 853595

Mr Vernon Hughes Llys Cerdd, 7 Clwyd Avenue, Abergele, Clwyd
Tel. 0745 824400

Mr P Alun L Jones Bro Dawel, Coedlan Iorwerth, Aberystwyth, SY23 1EW
Tel. 0970 623058

Mr Allan Mayne 54 Beechleigh Close Green Meadow, Cwmbran, NP44
5EG

Dr D Huw Owen National Library of Wales, Aberystwyth, SY23 3BU
Gelli Glyd, Ffordd Llanbadarn, Aberystwyth, Dyfed
Tel. (Office) 0970 623816 (Home) 0970 611644

X Dr Dilys Quick Flat 40, Belgrave Court, Walter Rd., Swansea
Tel. 0792 473058

Ms Ann Rhydderch Dept. of Culture & Leisure, County Offices,
Caernarfon, Gwynedd, LL55 1SH
Tel. (Office): 0286 679468; (Home): 0341 423203

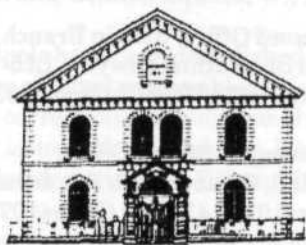
Dr M V J Seaborne Pen-y-lan, Cilcain Rd., Pantymwyn, Mold CH7 5NJ
Tel. 0352 740823

Mr Neil Sumner 10 High St., Penarth, South Glamorgan, CF64 1EZ
Tel. 0222 707962

Mr A G Veysey Clwyd Record Office, The Old Rectory,
Hawarden, Clwyd Tel. 0244 532414

Pontypridd

Historical and Cultural Centre



The history of Pontypridd and its people, told through a variety of exhibits

Working models. Including a model railway and a model colliery.

Objects. Used at work, in the home and in recreation.

Recorded voices. People of Pontypridd telling their own history.

Archive film. Important aspects and moments of the history of the town and the valleys.

The Centre is located in a converted chapel whose pipe organ is still used for recitals.
A new audio visual programme explains the origins of the chapels and traces the influence of Welsh religious dissent at home and overseas.

There is also a full programme of visiting exhibitions
on historical, scientific and artistic subjects.

Tourist Information Centre

Open: Tuesday - Saturday 9am - 5pm
(& Bank Holidays)

Admission: Adults 25p Children 15p

Bridge Street, Pontypridd, Mid Glamorgan CF37 4PE
Telephone (0443) 402077/480786

How to get there: The Centre is about 500 yards from the A470 -
Ynysybwl exit (6 miles from M4 junction 32)

At the "Gateway to the Valleys"

Canolfan Hanesyddol a Diwylliannol Pontypridd

Argraffwyd yn Llyfrgell Genedlaethol Cymru
Printed at the National Library of Wales